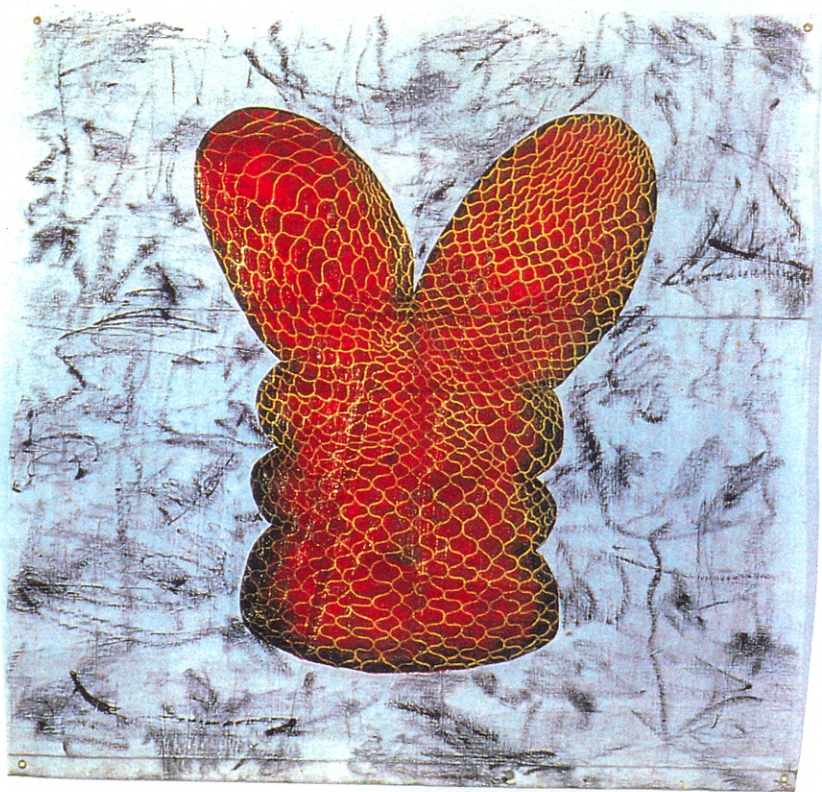


S T A T L E S T E

RESEMBLE A BIZARRE TRAVELOGUE FROM AN ALTERNATIVE DIMENSION.

ASHLEY CRAWFORD DECODES THE MYSTERIES BEHIND THE MAPS.



This page:

Offalperfume, 1997,
ink on tarpaulin, 58.5 x 58.5 in.

Facing page:

(top) **Ms Chemical and
Mr Smog get Married**, 1997,
ink on tarpaulin, 58.5 x 58.5 in.
(bottom) **Blue West One**, 1997,
ink on tarpaulin, 58.5 x 58.5 in.